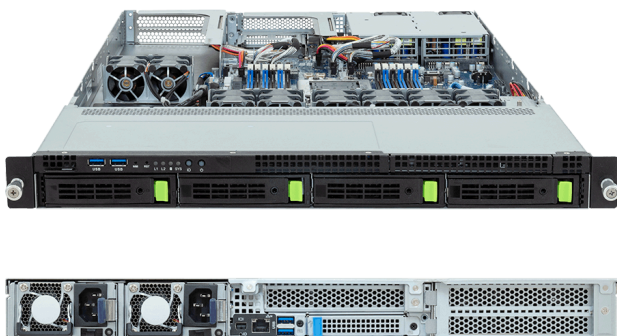


# R143-EG0-AAC2

Rack Server - AMD EPYC™ 8005/8004 Server Processors - 1U UP 1 x PCIe Gen5 GPU (NVMe/SATA/SAS)



## Key Features

- Supports 1 x dual-slot Gen5 GPU
- Single AMD EPYC™ 8005/8004 Server Processors
- 6-Channel DDR5 RDIMM per CPU with 12 x DIMMs
- 4 x 3.5"/2.5" Gen4 NVMe/SATA/SAS hot-swap bays
- 1 x M.2 slot with PCIe Gen3 x4
- 1 x FHFL PCIe x16 slot with Gen5 x16 lanes for GPUs
- 1 x FHFL PCIe x16 slot with Gen5 x16 lanes
- 1 x FHHL PCIe x16 slot with Gen5 x16 lanes
- 1 x OCP NIC 3.0 PCIe Gen5 x16 slot
- 1+1 1300 W 80 PLUS Platinum redundant power supplies

## Applications

AI Platform, AI Inference Server, Visual Computing, Networks Server, Servers for Hybrid/Private Cloud...

## Specification

|                             |   |                              |  |
|-----------------------------|---|------------------------------|--|
| <b>Dimensions</b>           | 1U (W438 x H43.5 x D815 mm)   | <b>I/O Ports</b>             | <b>Front:</b><br>2 x USB 3.2 Gen1<br><b>Rear:</b><br>2 x USB 3.2 Gen1, 1 x Mini-DP, 1 x MLAN   |
| <b>Motherboard</b>          | MEG3-GU0  | <b>Backplane Board</b>       | PCIe Gen4 x4 or SATA 6 Gb/s or SAS 12 Gb/s   |
| <b>CPU</b>                  | AMD EPYC™ 8005 Server Processors<br>AMD EPYC™ 8004 Server Processors<br>Single processor, cTDP up to 225 W  | <b>TPM</b>                   | 1 x TPM header (SPI), Optional TPM 2.0 kit: CTM010   |
| <b>OS Compatibility</b>     | <a href="#">OS Support List</a>   | <b>Power Supply</b>          | 1+1 1300 W 80 PLUS Platinum redundant power supplies<br>AC Input: 100-240 V  |
| <b>Socket</b>               | 1 x LGA 4844 (Socket SP6)   | <b>System Management</b>     | ASPEED® AST2600 Baseboard Management Controller<br>GIGABYTE Management Console web interface   |
| <b>Chipset</b>              | System on Chip  | <b>System Fans</b>           | 8 x 40x40x56mm   |
| <b>Memory</b>               | 6-Channel DDR5 RDIMM, 12 x DIMMs<br>[EPYC 8005] Up to 6400 MT/s (1DPC), 5200 MT/s (2DPC)<br>[EPYC 8004] Up to 4800 MT/s (1DPC), 3600 MT/s (2DPC)  | <b>Operating Properties</b>  | Operating: 10°C to 35°C, 8% to 80% (non-condensing)<br>Non-operating: -40°C to 60°C, 20% to 95% (non-condensing)                     |
| <b>LAN</b>                  | 1 x 10/100/1000 Mb/s Management LAN   | <b>Packaging Content</b>     | 1 x R143-EG0-AAC2<br>1 x CPU heatsink<br>1 x Mini-DP to D-Sub cable<br>1 x GPU power cable (16-pin, 450mm)<br>1 x 2-Section Rail kit |
| <b>Video</b>                | Integrated in ASPEED® AST2600<br>- 1 x Mini-DP  | <b>Ordering Part Numbers</b> | 6NR143EG0DR000AAC2*  |
| <b>Storage</b>              | <b>Front hot-swap:</b><br>4 x 3.5"/2.5" Gen4 NVMe/SATA/SAS [1]<br><b>Internal M.2:</b><br>1 x M.2 (2280/22110), PCIe Gen3 x4<br><br>[1] SAS card is required to support SAS drives.           | <b>Optional Parts</b>        | - 3-Section Rail kit (Supports CMA): 25HB2-A56121-K0R<br>- Cable Management Arm: 25HB1-R18300-K0R                                    |
| <b>RAID</b>                 | Require RAID add-in cards   |                              |  |
| <b>PCIe Expansion Slots</b> | 1 x FHFL x16 (Gen5 x16), for GPUs<br>1 x FHFL x16 (Gen5 x16) [1]<br>1 x FHHL x16 (Gen5 x16)<br>1 x OCP NIC 3.0 (Gen5 x16), Support NCSI<br><br>[1] Blocked when a dual-slot GPU is installed. |                              |  |



Learn more at: <https://www.gigabyte.com/Enterprise>

\* All specifications are subject to change without notice. Please visit our website for the latest information.

\* All trademarks and logos are the properties of their respective holders.

© 2026 Giga Computing Technology Co., Ltd. All rights reserved.

Last updated: May 19, 2026

Designed by

